



# WeldQAS

Quality Assurance System

## inline Weld seam inspection

- Documentation
- Monitoring
- Fault Detection

HKS-Prozesstechnik GmbH  
Heinrich-Damerow-Str. 2  
D-06120 Halle / Saale  
Tel. +49 (0)345 68309-0  
Fax +49 (0)345 68309-49  
info@hks-prozesstechnik.de  
www.hks-prozesstechnik.de



AN ESAB® BRAND



## Compact - version

Standard device for the monitoring of one or two welding torches



- dimensions: 330\*200\*135mm (stand-alone or wall fastening)
- multi-touch-display 10.1 inch
- highest reliability by passive cooling and industry flash memory
- Ethernet, USB, HDMI or VGA (optional)
- closed operating system Windows embedded, WeldQAS software
- direct connection of the sensors ( 8 differential inputs with 25 kHz or 4\*250 kHz, 3 counter inputs 100 kHz, TPS)
- 24 separate digital in- and outputs
- Profibus/Profinet integrable



pult version

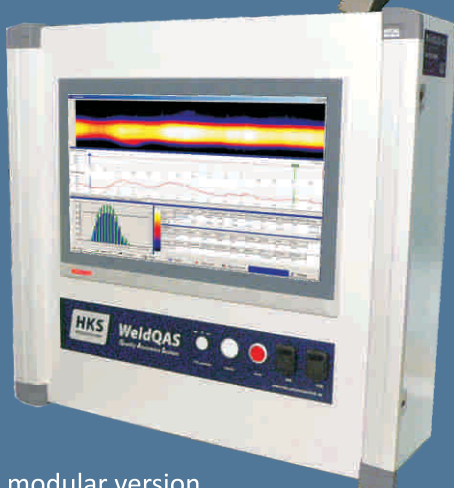
universal cabinet

## Cabinet versions

System for complex sites with more than two welding torches, multiple head SAW installations, endless tube production...



- powerful passive cooled CPU with touch-display
- separable from the measuring unit up to 200m via HKS-ethernet
- industry flash memory with closed Windows embedded
- unlimited amount of measuring channels
- database server integrated.
- version available as cabinet, console, wall closet
- channel number configured by multiple measuring modules
- integration of additional modules for galvanic isolation, additional relays, central power supply 24 V



modular version

# Functions

## Outstanding presentation and analysis functions

- dynamic online arc analysis
- monitoring by envelopes with an automatic learning function
- representation of the production quality as a note scale with statistical analysis of trends
- tolerance bands for warnings and faults
- "not OK" - rejection faulty parts

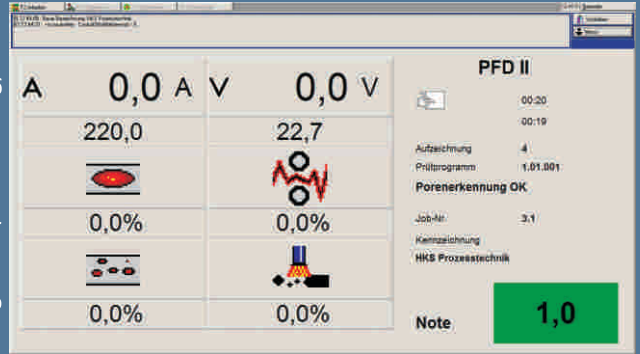
## Network function integrated

- ethernet interface allows access to every device for the data query and for the change of the inputs
- automatic data store with failure safeguarding and storage function on a central data server
- monitoring of complex production lines without number restriction

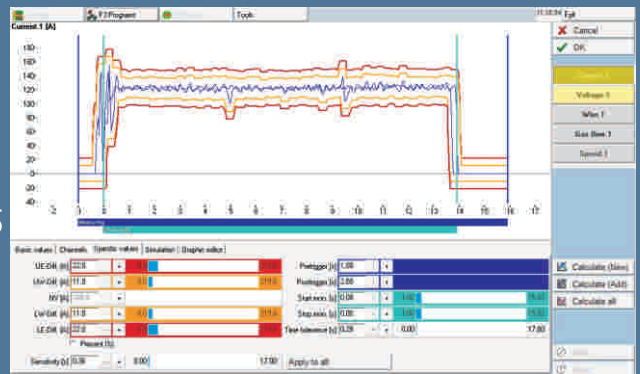
## Visualisation of the production

- demonstration of the seam on each part
- extensive reporting functions
- part identification

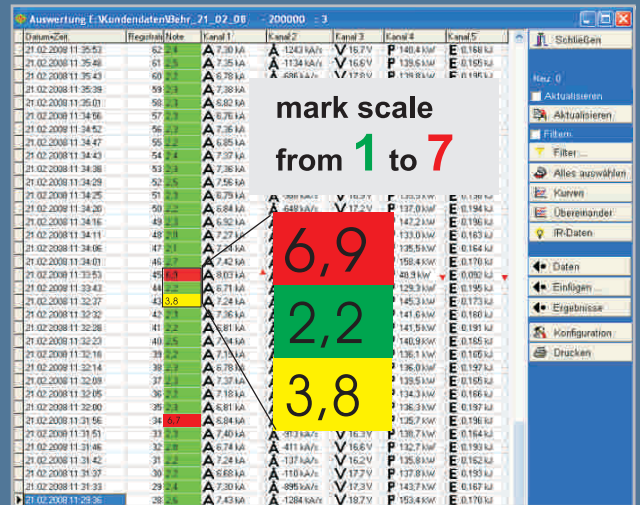
application with pore recognition (MIG-welding)



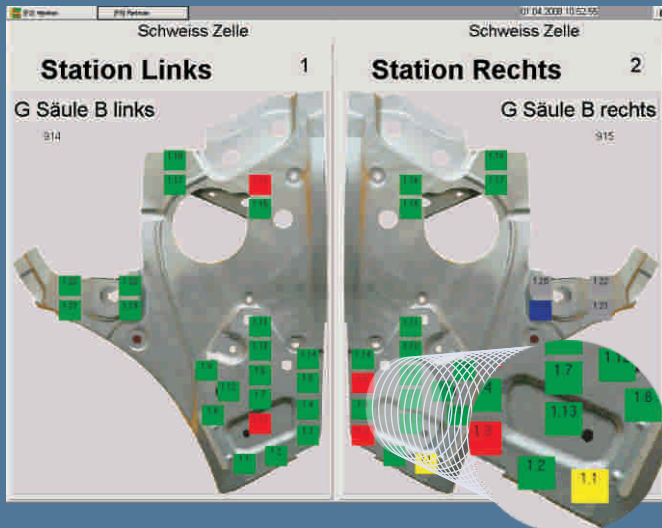
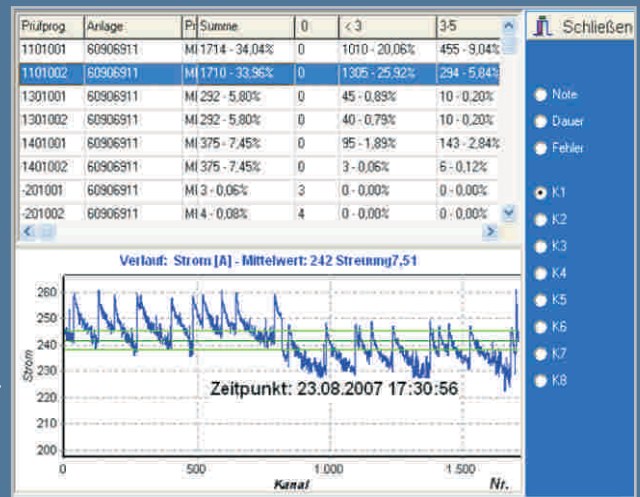
Graphical representation of the welding parameters



Database report according to filter choice



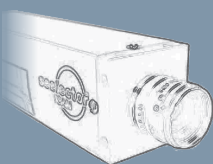
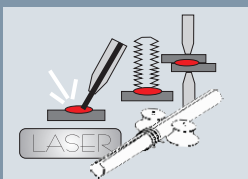
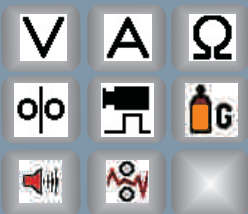
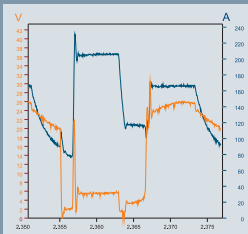
Statistical evaluation with trend analysis and QA-statistics





**WeldQAS**

**100%**



# We eye your welding quality

**Monitoring and documentation of the welding production**

**Optimisation of the process and avoidance of rejects**

**Procedure specific dynamic real time analysis**

- e.g. recognition of pores in MIG/MAG-welding and cold bonds in resistance welding

**Unlimited amount of additional channels**

- e.g. complete visualisation of tube mills

**Applicable for all welding processes**

- with specific evaluations

**Part identification – complete traceability**

**Simultaneous recording of image data and measured values**

**Evaluation of the process parameters conforming to standards**